

COM 08

Anti-glare design
SDCM<3 CRI>90
Suitable for general lighting

C08 . 28W 015 B IP20 927

Model Power Beam angle Body color IP grade CCT

Model
COM

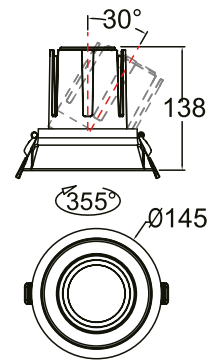
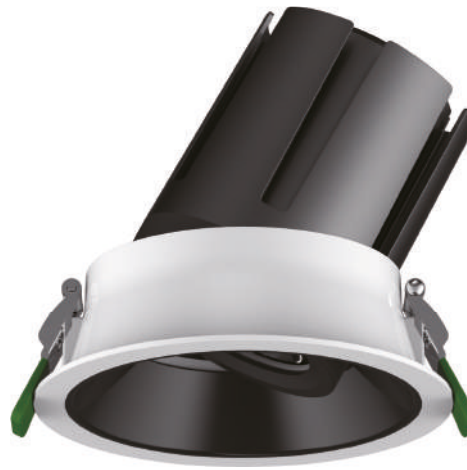
IP grade
IP20

Power
28W [W]

CCT
927 2700K
930 3000K
940 4000K
950 5000K

Beam angle
015 [°]
024 [°]
035 [°]
050 [°]

Body color
B *Black*
W *White*



Features

LED type	CREE
Color and CCT	2700K/3000K/4000K/5000K
Other colors	Upon request
Beam angle	15°/24°/35°/50°

Performance

Max. delivered output	2600lm
Efficacy	93lm/W

Electrical and control

Supply type	Main voltage (Integral LED driver)
Input voltage	AC240V
Max. power consumption	28W
Dimming	Upon request

Physical

Cut out	130mm
Housing material	Aluminium
Optics material	PMMA
Weight	-
Operating temperature	-25/+55°C

Accessories

Matt black reflector	ACC00150
Titanium reflector	ACC00151
Bright silver reflector	ACC00152
Matt silver reflector	ACC00153
Matt white reflector	ACC00154
Honeycomb D70	ACC00155
Smooth filter D70	ACC00156

