

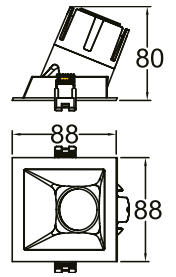
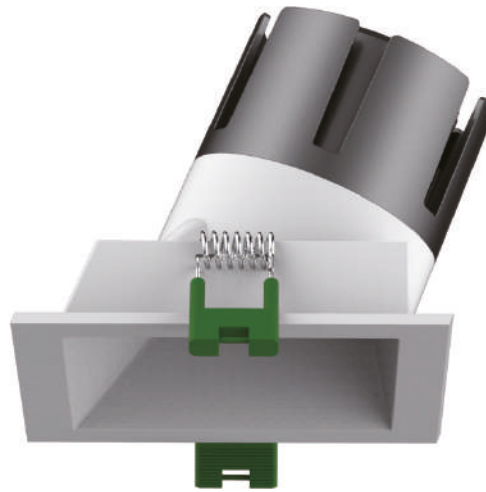
COM 12

Anti-glare design
 Different power options
 SDCM<3 CRI>90
 Suitable for general lighting

C12 . 06W 015 B IP20 927

Model Power Beam angle Body color IP grade CCT

Model	IP grade
COM	IP20
Power	CCT
06W [W]	927 2700K
09W [W]	930 3000K
	940 4000K
Beam angle	950 5000K
015 [°]	
024 [°]	
035 [°]	
055 [°]	
Body color	
B Black	
W White	



Features

LED type	CREE
Color and CCT	2700K/3000K/4000K/5000K
Other colors	Upon request
Beam angle	15°/24°/35°/55°

Performance

Max. delivered output	500lm (6W) / 700lm (9W)
Efficacy	83lm/W (6W) / 78lm/W (9W)

Electrical and control

Supply type	Main voltage (Integral LED driver)
Input voltage	AC240V
Max. power consumption	6W/9W
Dimming	Upon request

Physical

Cut out	75x75mm
Housing material	Aluminium
Optics material	PMMA
Weight	-
Operating temperature	-25/+55°C

Accessories

Smooth filter D40	ACC00166
-------------------	----------

