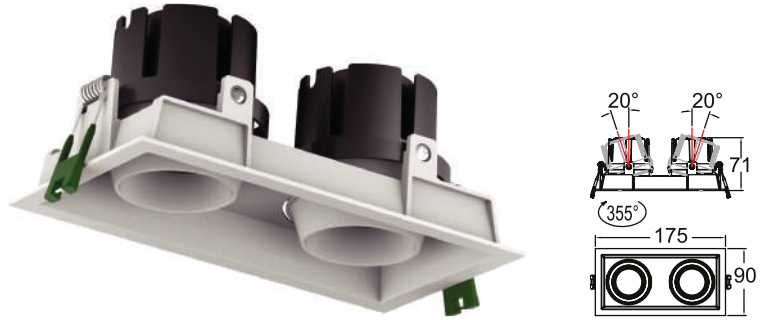


COM 27

Anti-glare design
 Modular design
 Different power options
 SDCM<3 CRI>90
 Suitable for general lighting



C27 . 12W 015 B IP20 927

Model Power Beam angle Body color IP grade CCT

Model	IP grade	
COM	IP20	
Power	CCT	
12W [W]	927	2700K
18W [W]	930	3000K
	940	4000K
Beam angle	950	5000K
015 [°]		
024 [°]		
035 [°]		
055 [°]		
Body color		
B <i>Black</i>		
W <i>White</i>		

Features

LED type	CREE 2x6/2x9W
Color and CCT	2700K/3000K/4000K/5000K
Other colors	Upon request
Beam angle	15°/24°/35°/55°

Performance

Max. delivered output	1000lm (12W) / 1400lm (18W)
Efficacy	83lm/W (12W) / 78lm/W (18W)

Electrical and control

Supply type	Main voltage (Integral LED driver)
Input voltage	AC240V
Max. power consumption	12W/18W
Dimming	Upon request

Physical

Cut out	165x80mm
Housing material	Aluminium
Optics material	PMMA
Weight	-
Operating temperature	-25/+55°C

