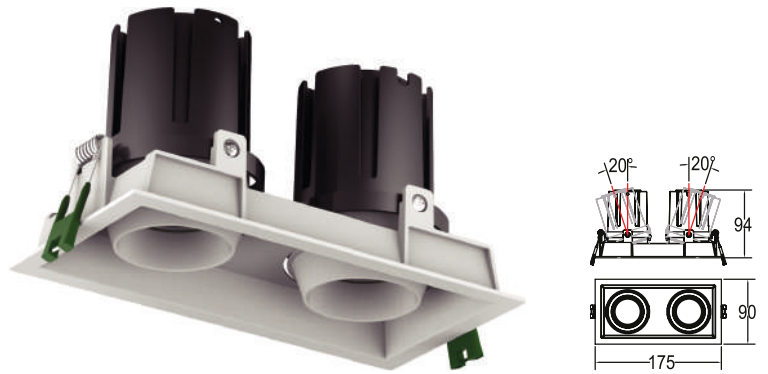


# COM 29

Anti-glare design  
 Modular design  
 SDCM<3 CRI>90  
 Suitable for general lighting



**C29 . 24W 015 B IP20 927**

Model Power Beam angle Body color IP grade CCT

**Model**  
COM

**IP grade**  
IP20

**Power**  
24W [W]

**CCT**  
927 2700K  
930 3000K  
940 4000K  
950 5000K

**Beam angle**  
015 [°]  
024 [°]  
035 [°]  
055 [°]

**Body color**  
B Black  
W White

## Features

LED type	CREE 2x12W
Color and CCT	2700K/3000K/4000K/5000K
Other colors	Upon request
Beam angle	15°/24°/35°/55°

## Performance

Max. delivered output	2000lm
Efficacy	83lm/W

## Electrical and control

Supply type	Main voltage (Integral LED driver)
Input voltage	AC240V
Max. power consumption	24W
Dimming	Upon request

## Physical

Cut out	165x80mm
Housing material	Aluminium
Optics material	PMMA
Weight	-
Operating temperature	-25/+55°C

