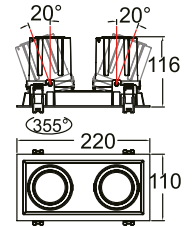
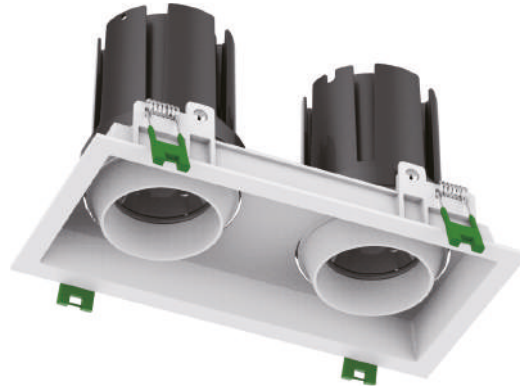


COM 31

Anti-glare design
 Modular design
 SDCM<3 CRI>90
 Suitable for general lighting



C31 . 48W 015 B IP20 927

Model Power Beam angle Body color IP grade CCT

Model COM	IP grade IP20
Power 48W [W]	CCT 927 2700K 930 3000K
Beam angle 015 [°] 024 [°] 035 [°] 050 [°]	940 4000K 950 5000K
Body color B <i>Black</i> W <i>White</i>	

Features

LED type	CREE 2x24W
Color and CCT	2700K/3000K/4000K/5000K
Other colors	Upon request
Beam angle	15°/24°/35°/50°

Performance

Max. delivered output	4300lm
Efficacy	90lm/W

Electrical and control

Supply type	Main voltage (Integral LED driver)
Input voltage	AC240V
Max. power consumption	48W
Dimming	Upon request

Physical

Cut out	205x95mm
Housing material	Aluminium
Optics material	PMMA
Weight	-
Operating temperature	-25/+55°C

