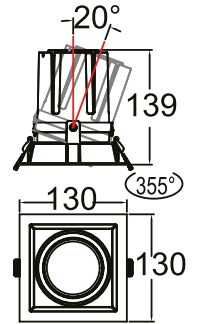
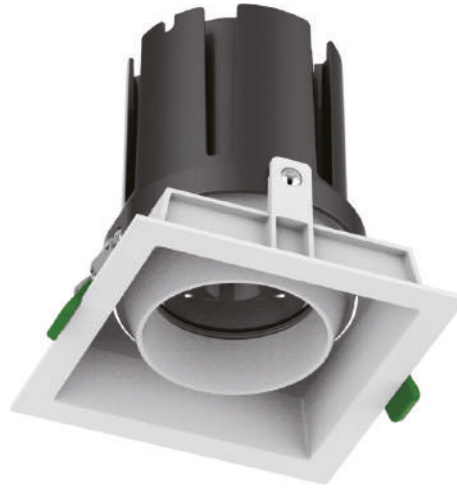


COM 32

Anti-glare design
 Modular design
 SDCM<3 CRI>90
 Suitable for general lighting



C32 . 28W 015 B IP20 927

Model Power Beam angle Body color IP grade CCT

Model	IP grade	
COM	IP20	
Power	CCT	
28W [W]	927	2700K
	930	3000K
Beam angle	940	4000K
015 [°]	950	5000K
024 [°]		
035 [°]		
050 [°]		
Body color		
B Black		
W White		

Features

LED type	CREE
Color and CCT	2700K/3000K/4000K/5000K
Other colors	Upon request
Beam angle	15°/24°/35°/50°

Performance

Max. delivered output	2600lm
Efficacy	93lm/W

Electrical and control

Supply type	Main voltage (Integral LED driver)
Input voltage	AC240V
Max. power consumption	28W
Dimming	Upon request

Physical

Cut out	115x115mm
Housing material	Aluminium
Optics material	PMMA
Weight	-
Operating temperature	-25/+55°C

